



Extremely Configurable  
PPM Software  
Get the Solution You Need  
and Deserve!

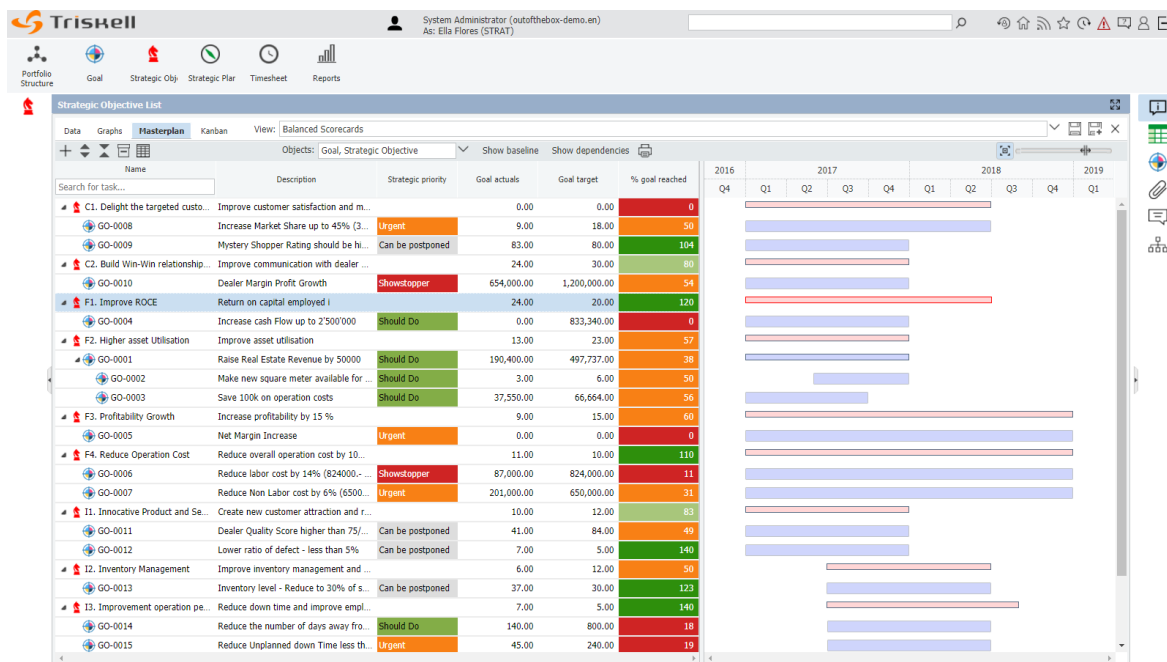


## From Company Strategy to Project Execution.

Intuitive Project Portfolio Management tools to identify which project delivers value or not to the organization in order to initiate, prioritize or stop the correct Projects and Programs. Combine financial, qualitative and strategic analysis in a Single Cloud PPM Software.



*Create strategic plans to identify, list, prioritise and share enterprise goals and initiatives.*

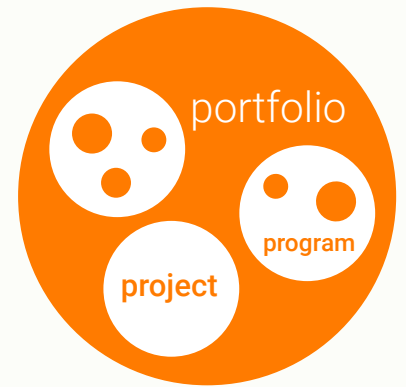


**Triskell is the only company-wide SaaS solution on the Project Portfolio Management market today that offers you all the flexibility and capabilities to:**

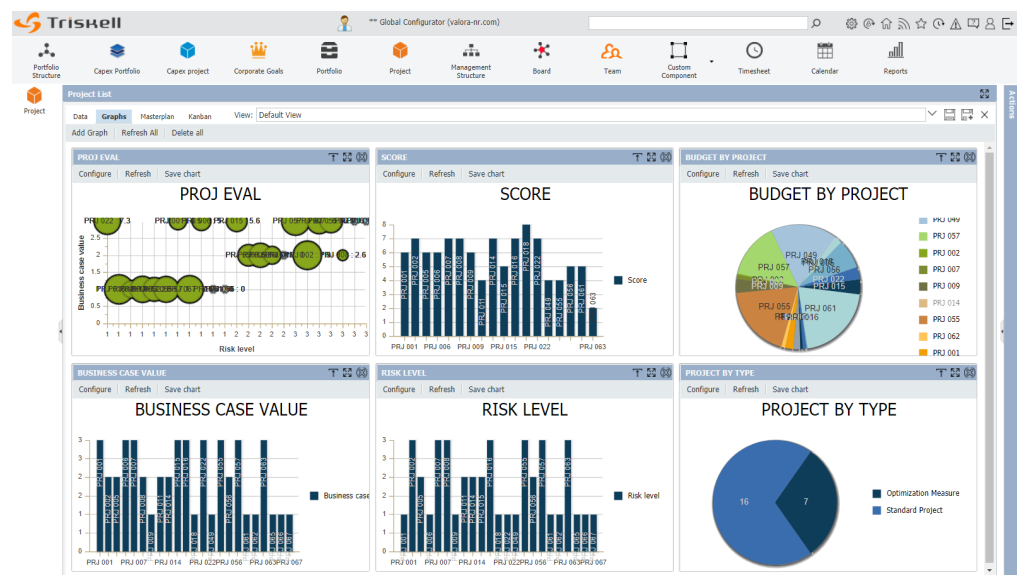
- Break any business strategy down into multiple portfolios and organizations.
- Dynamically prioritize, fund and staff initiatives and actions according to strategic targets, as well as available budgets and resources.
- Plan work and schedule your resources in a standard or agile mode.
- Dynamically control execution and progress on several axes and identify the potential gaps with the original targets.
- Re-align periodically strategy and execution.

## SaaS Project Portfolio Management.

SaaS Project Portfolio Management to get the real-time pictures of your organisation and resources Focus on the right projects; make the right decisions; which project to start and which one to stop. Have a clear view which project delivers value to your organisation.



*Increase Visibility,  
Monitor Progress, Provide  
visibility for Executives.  
Triskell PPM-Factory's  
top-down approach to  
Enterprise Project  
Portfolio Management  
ensures that PMOs and  
Executives have the right  
tools.*



### Portfolio Monitoring and Planning

Thanks to Triskell's PPM-Factory easy-to-use Masterplan, Project and Initiative Scoring and Powerful Scenario Definition and Simulation, you can ensure you are taking on the right projects.

### Get Portfolios and Projects under control

Minimize discrepancy failure by gaining complete control over your project deliverables. Identify potential problems early in the project and provide the visibility to take corrective action before any resourcing or financial impact can occur.

### Get the full picture and drill-down into details

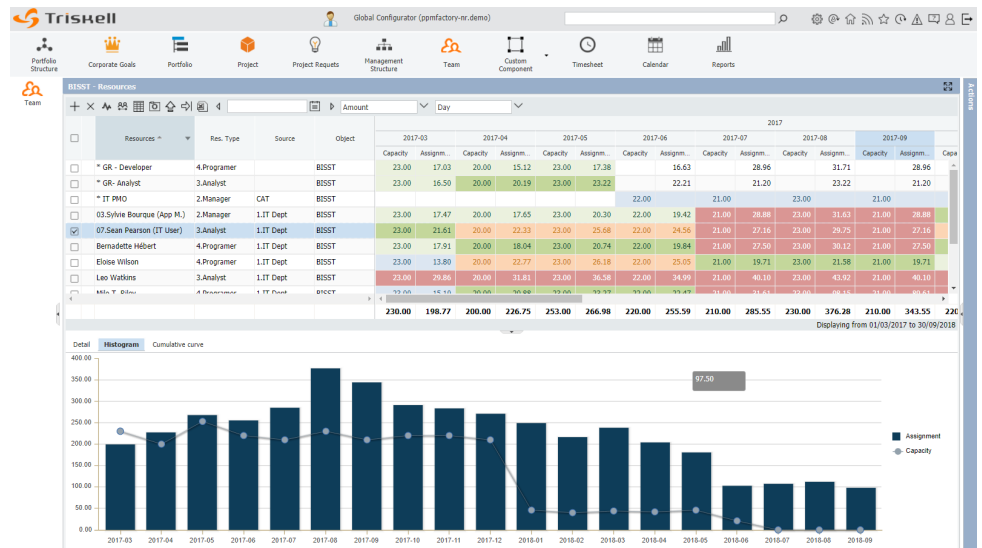
Triskell PPM-Factory provides a single and consolidated view of any project, program, and portfolio status to improve governance by allowing executives, portfolio managers as well as project managers to make better project decisions.

## Resource Management.

Triskell PPM-Factory's unique Resource Management solution help Resource Managers to have full overview of your resources workload and demand.



*Triskell PPM-Factory Resource Management. The right People - Doing the Right Things to support your business strategy.*



### Resource Capacity Planning

Top-Down Resource Allocation allows you to start planning the supply and demand of generic resources (Developer, Technician, Engineer, etc.), rather than named resource at Portfolio, Program or Project level. This way you have a clear understanding of overall resource constraints and costs, without having to jump into Project plans and execution details.

### Ensure accurate project planning

Triskell PPM-Factory provides Resource Managers with a consistent approach to projects and resources planning processes, with the detail of tasks and the resources involved. It provides a clear link between Capacity Management and effective resource assignment in project planning.

### Easy to use Macro and detailed Project Planning Tools

Improve your Planning using Triskell PPM-Factory high-level resource demand management tools with detailed project planning using Gantt Chart or Agile framework.

### Clear Resource Workload Tracking

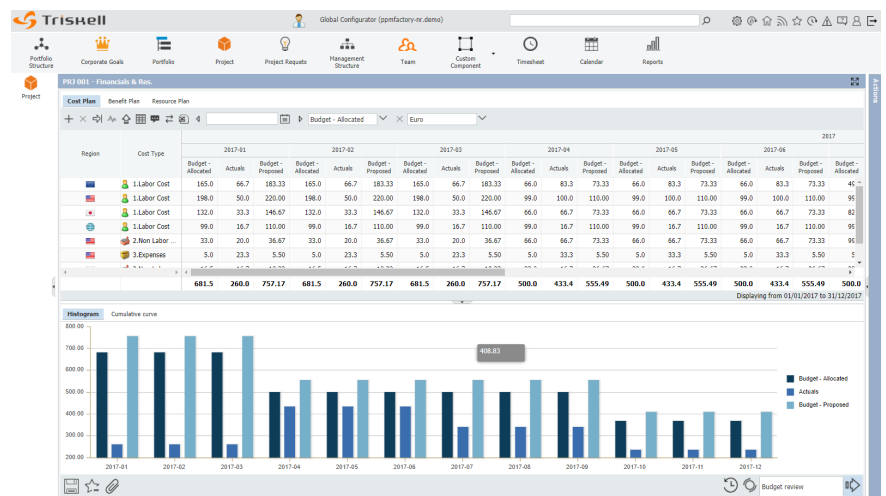
Go beyond standard Project Portfolio Resource management, tracking resource workload across the whole organisation including project and non-project activities.

## Budget Management & Cost Tracking.

With Triskell PPM-Factory's Financial Management capabilities, you can manage your company's portfolio with real-time visibility into financial performance from budgeting through collection of actual costs.



*Triskell PPM-Factory provides robust financial management capabilities to support project -and portfolio- level budgeting and planning.*



### Gain Complete Control over Project Financials

Triskell PPM-Factory provides complete visibility and control over your Portfolios, Programs and Project financials. Get a clear view of actual costs and expenditure and compare it with the forecast to quickly identify any discrepancies. It creates the transparency required to accurately measure ROI.

### Get Visibility into Investment Performance

Triskell PPM-Factory allows you to get a clear view into the downstream performance of your investments. Easily compare planned expenditure to actual gives you total control and flexibility to simplify Portfolios reorganization and investments shifts according to the new situation.

### Optimize Resources Costs

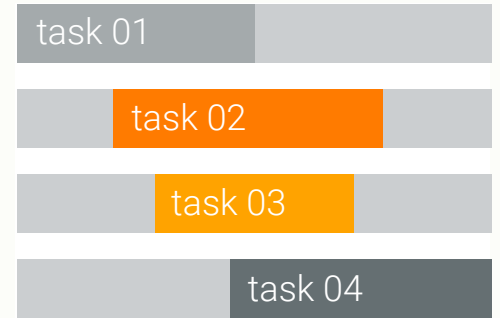
Triskell PPM-Factory allows you to allocate resources more strategically, maximize billable time, and closely control – and report on – your costs.

### Agile Budgeting Process

When it comes to the budgeting process, Triskell PPM-Factory meets the needs of all those involved. Triskell PPM-Factory provides these roles with clear and precise information relating to their budgeting requirements, funding decisions and expected benefits from investments and projects.

## Master Plan & Gantt Chart.

With Triskell PPM-Factory visual planning tools you allow Project Managers to immediately see the entire life-cycle and time-line of the project, significantly reduce project administration and reporting times.



### Triskell PPM-Factory

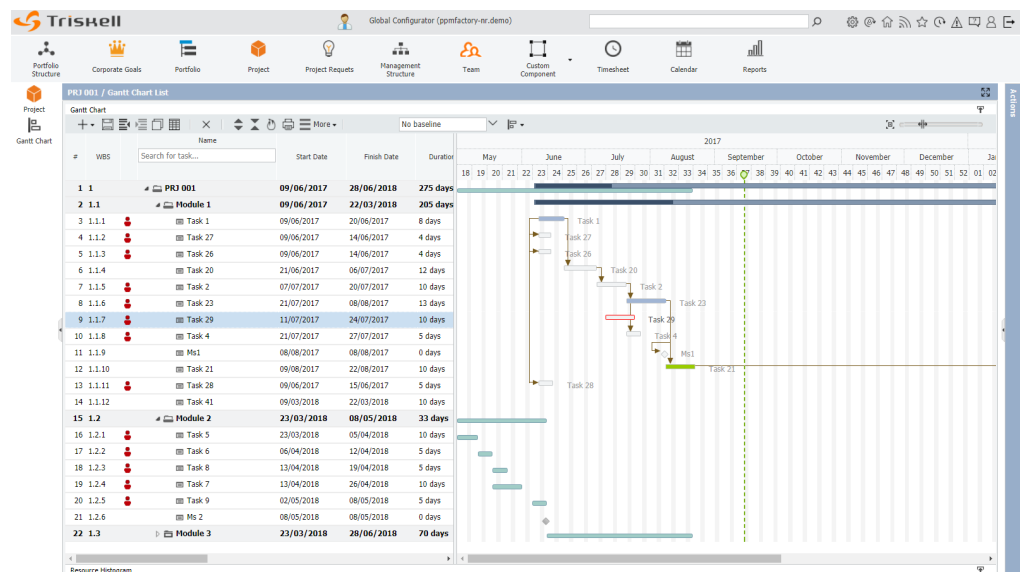
#### Easy-to-use Master

Plans for clear overview of Strategy and Portfolio

Execution time line with

Powerful Gantt Chart

for easy Project and Resource Planning.



### Get a clear understanding of Strategy items or Project Portfolio items with powerful Master plans

The Triskell PPM-Factory Master plans are great tools to get a quick and easy visual representation of any portfolio item in the time line. It helps to understand how initiatives, milestones, projects or any objects are organised in the timeline, like when it should happen, when it really happens and what the actual status is. Master plans can use colors defined by life cycle stages for visual enhancement.

### Easy to use and Powerful Planning Tool

Triskell PPM-Factory Gantt chart allows users to schedule any object (i.e. projects, maintenances) in full web mode.

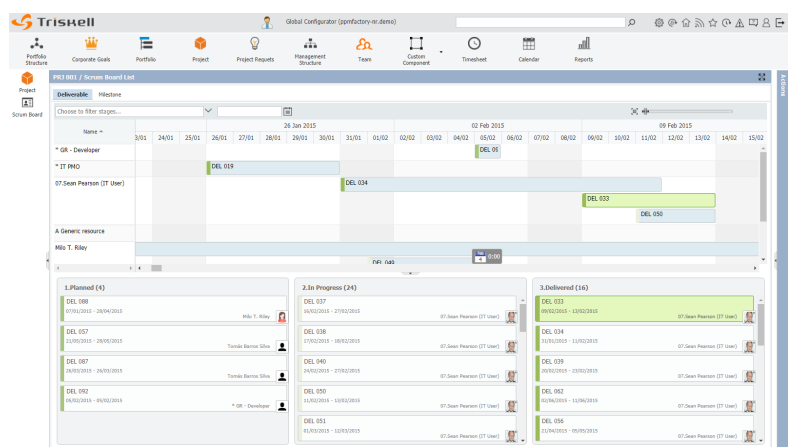
### Detailed planning with clear view of Resource Usage to Prevent any Allocation Conflict

Easy-to-use web-based Gantt-chart with real-time display of resource usage and overbooking to make the project manager's life easier. Graphically identify over-allocation directly during project planning and staffing.

## Agile & Kanban Boards.

The active involvement, cooperation and collaboration make agile development teams more productive. Agile approach helps to create highly motivated, high performance teams in a much more rewarding approach for everyone. Triskell PPM-Factory embeds a full web scrum board to allow the agile management of any object: deliverables, risks, issues, tickets, customer requests, ideas....

*No matter if you are looking for a Agile Lean, Agile Scrum, Safe Agile or just an easy way to represent and manipulate information in an easy-to-use and Powerful Kanban, Triskell PPM-Factory as the solution for you.*



### *Kanban Boards everywhere you want over Project Financials*

Triskell PPM-Factory's configurable and flexible Kanban boards allow you to represent any list of information in an easy-to-use board. Increase productivity and user adoption, providing easy-to-use solutions, allowing clear visibility of data and status, with easy update and information organisation through simple drag & drop actions.

### *Accessing, sorting, and updating information as never been this easy*

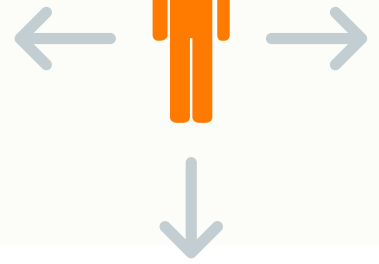
Triskell PPM-Factory Kanban board supports the fly re-order, filtering, and drag & drop to update values or change status. It creates a new and seamless way to navigate through your Strategic Plan, Program, Portfolios, Projects or any other object.

### *Agile Portfolio Management*

Triskell PPM-Factory supports Agile and Lean practices, allowing decentralized decision making and Agile Estimating and Planning.

### *Agile - Scrum*

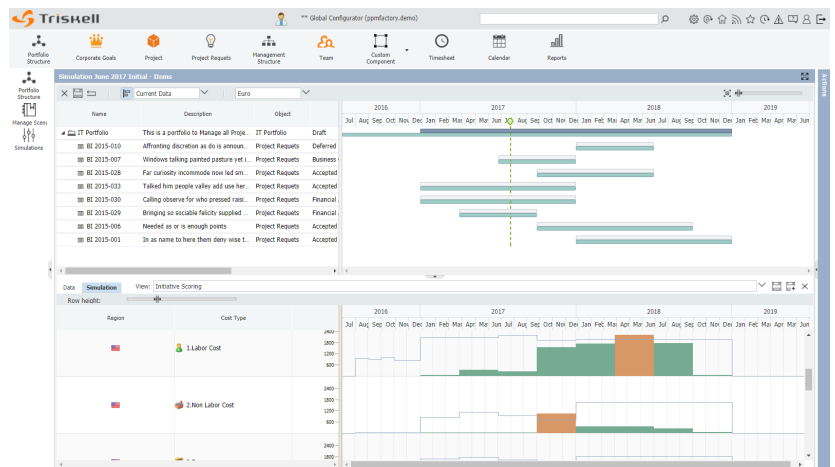
Triskell PPM-Factory Agile Scrum template allows you to manage Products, Versions and Sprints in a very easy way. During a sprint, teams will be able to use Kanban Boards and Burndown Charts.



## Simulation & Scenario Planning.

With Triskell PPM-Factory What-if capabilities, stop Gambling, make accurate decision, anticipate changes, simulate different scenarios to ensure maximum performance.

*Make informed decisions with accurate What-if analysis.*



### *Easy to use Simulation and Scenario Modeling*

With **Triskell PPM-Factory** one can create different scenarios to build and plan the right set of programs and projects to suit your financial and resource capacities or understand how to reach your objectives considering all existing projects and project requests.

### *Optimize resource usage according to priorities*

**Triskell PPM-Factory** What-if analysis make easy to choose which project to start or not, to shift or not in order to optimize your resource usage and deliver expected results according to priority and Strategy.

### *Interactive Gantt views to play with your timeline. Simple drag & drop to play with the whole timeline*

No matter if you want to manage scenarios regarding resources, financial capacity or output our potential benefits, color coded Gantt charts allow you to easily drag & drop initiatives, project requests, projects, etc. to visually understand its impact, and to have a clear view on how to organize your team line to achieve your goals respecting your resource and financial constraints.

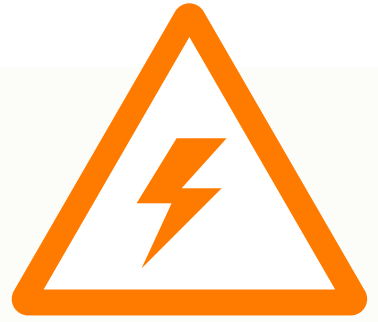
### *Scenarios & Simulations on every Object*

**Triskell PPM-Factory** supports "What if" scenarios on any object. For example, users can build scenarios on a list of projects, products, issues, deliverables or risks

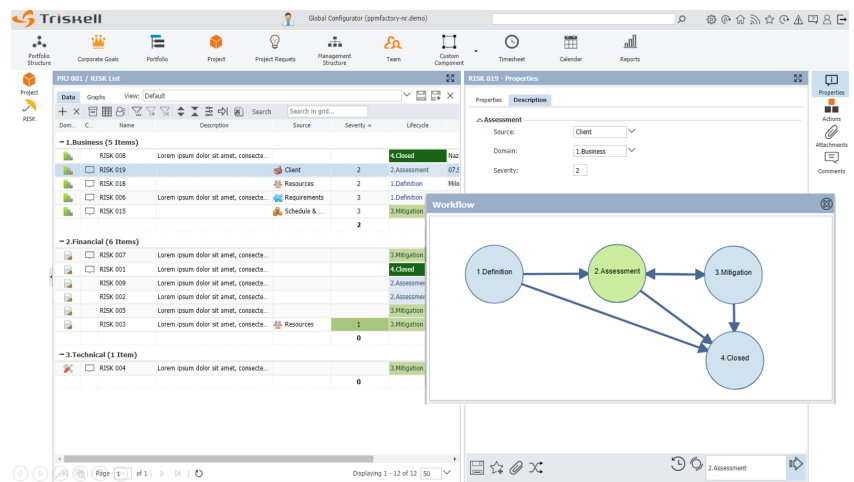


## Risk, Issue & Change Management.

Risks, Issues, and Change Requests at your fingertips. In today's world, it is so important to get the right tool to anticipate or to react to any event. Thanks to its extreme flexibility, Triskell PPM-Factory allows you to get all the tools and functionalities to manage the complete lifecycle of projects and portfolios.



*With Triskell PPM-Factory's you can get total control of your portfolios, managing any kind of foreseen or unforeseen events, such as Risks, Change Request, Issues and others.*



### *Manage Risks and Changes in a global perspective, be prepare to face any changes*

Risk identification and mitigation as well change tracking became key functionalities for organizations in today's changing world.

### *Changement is Always a Risk*

This is why **Triskell PPM-Factory** combines change and transformation management with efficient and pragmatic risk management features. List and assess all related risks. Create and manage mitigation plans. Run simulations to compare different scenarios and measure impact and potential risk consequences.

### *Get issue under control*

**Triskell PPM-Factory** offers a complete set of features to ensure you can easily assess the health of your portfolios and track any unforeseen events like issues, and your entire team remains focused on efficient and effective execution.

### *What is visible is easier to manage*

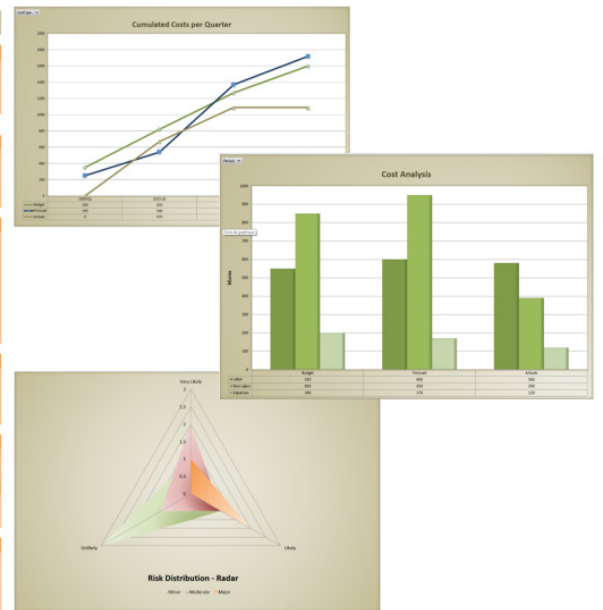
**Triskell PPM-Factory** configurable views dashboards, reports and forms that provide you all the necessary information to stay on top of everything. It makes your life easier providing agile capabilities to manage issues and other events at Portfolio and Project level.

## Reporting, Dashboards & Datamart.

Triskell PPM-Factory offers a comprehensive range of reporting and analytics options. Configurable Dashboards, Score Cards, Reports and Datamart ensure that you get the right information, at the right time.



*Reporting & Analytics to measure performance and improve decision making.*



## Configurable dashboard and reports

Triskell PPM-Factory offers a comprehensive range of reporting and analytics options, namely Configurable Dashboards, Grid Views, Kanbans, Master Plans, Reports and Datamart. These options ensure that you get the right information at the right time.

## Reporting with Microsoft Excel

Triskell PPM-Factory not only support simple data export to Microsoft Excel, but it also allows users to automatically extract data to be exploited in Microsoft Excel reports, defined by yourself, according to your needs. This way, without also having to purchase specialized OLAP tool, you take advantage of any Microsoft Excel advanced features such as Pivot Tables, conditional styling, and drill-downs to analyse project data.

## Dynamic Datamart for Reporting

Triskell PPM-Factory includes a dynamic datamart that can be used for reporting and interfaces, providing automatic data refresh and giving access to all data stored in Triskell PPM-Factory.

## Timesheets.

Triskell PPM-Factory easy to use timesheets allow resources to record the time they have spent on project and non-project activities according to the period and granularity of their choice. This provides managers with a clear understanding resource usage and associated costs.



*Strategy and Project Execution is nothing without measuring results. Powerful timesheets are the best way to collect actuals and status to provide clear information for portfolio and project tracking.*

Work App.	Res. App.	Path	Parent	Object	Object Type	Description	Actuals	Total	Sun 1	Mon 2	Tue 3	Wed 4	Thu 5	Fri 6	Sat 7
		IT Portfolio/MT 001	MT 001	DEL 025	Deliverable	Far far below jeepers aside...	218.00								
		IT Portfolio/MT 004	MT 004	IS 019	Issue	Among far until outside oth...	220.00	3.00		2.00	2.00	-1.00			
		IT Portfolio/PRJ 002	PRJ 002	DEL 002	Deliverable	Clear arousingly swelled s...	262.00	44.00		2.00	2.00	2.00	2.00	2.00	
		IT Portfolio/PRJ 004	PRJ 004	RISK 014	Risk		240.00	22.00		1.00	1.00	1.00	1.00	1.00	
		IT Portfolio/PRJ 023	PRJ 023	RISK 017	Risk	test scrum board	284.00	66.00		3.00	3.00	3.00	3.00	3.00	

User	User Pool	2015-01	2015-02	2015-03	2015-04	2015-05	2015-06	2015-07	2015-08	2015-09	2015-10	2015-11	2015-12
PRJ 023													
07 Sean Pearson (IT User)	PRJ 023												
Bernadette Hébert	PRJ 023												
Leo Watkins	PRJ 023												
Nicholas Richardson	PRJ 023												
PRJ 024													
Leo Watkins	PRJ 024												
Nicholas Richardson	PRJ 024												

## A Complete Picture of Resource Usage and Costs

With Triskell PPM-Factory you know who is working on what, and how much it costs. A complete picture of resource usage and the financial implications (including budgets, costs and margins) can be identified from the many dashboards and reports delivered by the system.

## Timesheets to support Portfolio and Project life cycle

Triskell PPM-Factory timesheet features go beyond simple time booking. Users can enter the estimate to complete (ETC) per day for agile management. Any timesheet detailed timesheet entry can be commented, and history of changes (values and status) is automatically kept by the system.

## Time Booking on any objects

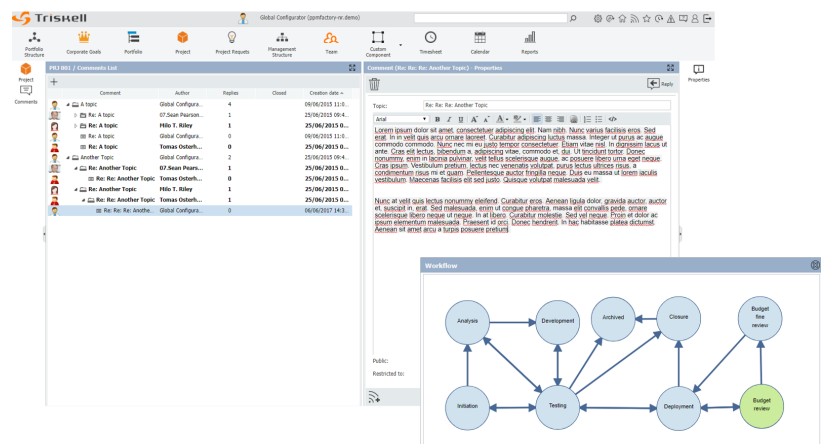
Triskell PPM-Factory allows users to book times not only on scheduled tasks as most of the other products but also on any object like deliverables, risks, issues and tickets. Timesheet displayed by week or month (one full week or one full month) and Time entry by day, week or month (i.e. a value per day, per week or per month).

## Collaboration & Workflows.

In today's world communication and collaboration are in the center of everything. **Triskell PPM-Factory** provides the right to stay on top of your portfolios and to share strategy and updates with everyone in or outside your organization.



*To stay on top of everything you need to be informed and be able to share information.*



## Costs Add and share rich comments

**Triskell PPM-Factory** advance comment management allows starting multiple forum discussion on any piece of information to achieve real collaboration.

## Triskell keeps you informed

Thanks to **Triskell PPM-Factory** alerts and email notifications you can get warnings and reminders when necessary. The information comes to you.

## Lifecycles & Workflows

Every object in **Triskell PPM-Factory** has its own workflow, from the simplest one (active / non-active) to the most complex one. For example, you can define workflows on projects, work packages, products, risks, deliverables, contracts and any other object you create.

Workflows - Lifecycles include:

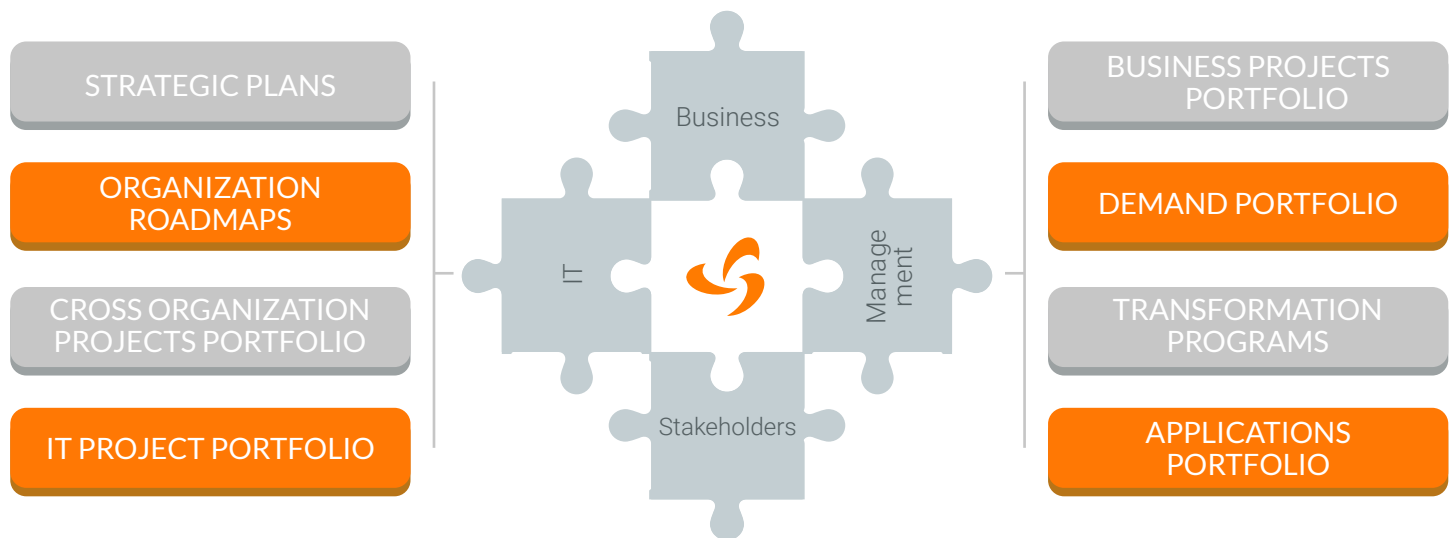
- Stages with control of the roles, attributes and features accessible at that stage (in combination with the user role on the object).
- Transitions between stages with mandatory documents and comments.
- Transitions can be controlled by role, so that only certain roles can advance an object from one stage to another.
- History of lifecycle changes for accurate tracking.

## Triskell Enterprise Portfolio Management System.

A Real Enterprise Solution. Triskell PPM-Factory provides an extremely flexible and powerful way to manage different business objectives into a single platform. Your organization can create, analyse, combine, add, and link different portfolios and each maintain a repository of objects completely different.



*Much more are standard PPM ! « Because Managing Project isn't not enough. You need to integrate people and departments and their business needs and management systems! »*



### **Ultimate Flexibility – Any kind of Portfolio**

Triskell PPM-Factory has been designed to let you modelise your own Portfolio Management system to manage:

- Any kind of project, portfolio, or program...
- Any business; project methodology.
- Any workflow to support your own business flow.
- Any kind of business object with as many attributes as you want.
- For anyone in the enterprise.

*One Tool For Everyone, The Real Enterprise Portfolio Management*

# PPM-FACTORY

An end-to-end Solution, from strategy planning to execution, and Portfolio and Performance management.



  
SPAIN  
Madrid

  
FRANCE  
Paris

  
USA  
Miami

  
SWITZERLAND  
Geneva

Europe: +41 22 552 22 30 | US: +1 347 480 11 57